



SSAS02604R
DI.PA. SPORT REMANUFACTURED
REAR LEFT AIR STRUT
FOR 2007-2013 MERCEDES-BENZ S-CLASS
FOR 2007-2013 MERCEDES-BENZ CL-CLASS



WARNING: *The air suspension system is under pressure (up to 10 bar, or 150 lbf/in). Verify pressure has been relieved and disconnect power to the air suspension system prior to disassembly. Do not allow dirt or grease to enter the system. Always wear standard hand, ear, and eye protection when servicing the air suspension system.*



SSAS02604R
DI.PA. SPORT REMANUFACTURED
REAR LEFT AIR STRUT
FOR 2007-2013 MERCEDES-BENZ S-CLASS
FOR 2007-2013 MERCEDES-BENZ CL-CLASS

GENERAL INFORMATION:

- Not to be stored below 5°F (-15°C) or above 122°F (50°C).
- Avoid damage to air lines and cables.
- Removal and installation is only to be performed by fully qualified personnel.
- Use car manufacturer's diagnostic software.

CAUTION: *Damage to the vehicle and air suspension system can be incurred if work is carried out in a manner other than specified in the instructions or in a different sequence.*



To avoid the possibility of short circuits while working with electric components consult your owner's manual on how to disconnect your battery.



Consult your vehicle owner's manual, service manual, or car dealer for the correct jacking points on your vehicle and for additional care, safety and maintenance instructions. Under no circumstances should any work be completed underneath the vehicle if it is not adequately supported, as serious injuries and death can occur.

AIR STRUT REMOVAL

1. SET STEERING TO STRAIGHT AHEAD.
2. LIFT VEHICLE AND REMOVE REAR LEFT WHEEL. (FIGURE 1)



FIGURE 1



SSAS02604R
DI.PA. SPORT REMANUFACTURED
REAR LEFT AIR STRUT
FOR 2007-2013 MERCEDES-BENZ S-CLASS
FOR 2007-2013 MERCEDES-BENZ CL-CLASS

3. REMOVE THE BRAKE CALIPER CLIP. (FIGURE 2)



FIGURE 2

4. REMOVE THE TWO (2) BOLTS HOLDING THE BRAKE CALIPER. REMOVE THE BRAKE CALIPER AND SUSPEND TO PREVENT DAMAGE TO BRAKE LINES. (FIGURE 3)



FIGURE 3

5. REMOVE THE FASTENERS AND INNER WHEEL LINER TO EXPOSE THE REAR AIR STRUT'S WIRING BLOCK. (FIGURE 4)

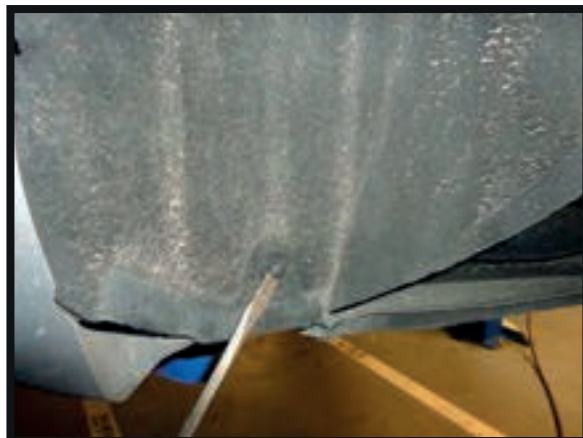


FIGURE 4



SSAS02604R
DI.PA. SPORT REMANUFACTURED
REAR LEFT AIR STRUT
FOR 2007-2013 MERCEDES-BENZ S-CLASS
FOR 2007-2013 MERCEDES-BENZ CL-CLASS

6. REMOVE THE METAL CLIP AND PLUG FOR THE REAR AIR STRUT'S DAMPENING COIL. (FIGURE 5)



FIGURE 5

7. REMOVE THE LOWER SWAY BAR END LINK NUT AND SEPARATE. (FIGURE 6)



FIGURE 6

8. REMOVE THE LOWER AIR STRUT MOUNTING NUT. (FIGURE 7)



FIGURE 7



SSAS02604R
DI.PA. SPORT REMANUFACTURED
REAR LEFT AIR STRUT
FOR 2007-2013 MERCEDES-BENZ S-CLASS
FOR 2007-2013 MERCEDES-BENZ CL-CLASS

9. REMOVE THE LOWER CONTROL ARM NUT. (FIGURE 8)



FIGURE 8

10. REMOVE THE REAR DASH COVER FROM INSIDE OF THE VEHICLE. (FIGURE 9)



FIGURE 9

11. PULL BACK THE FOAM INSULATION TO EXPOSE THE AIR STRUT TOP MOUNT. (FIGURE 10)



FIGURE 10



SSAS02604R
DI.PA. SPORT REMANUFACTURED
REAR LEFT AIR STRUT
FOR 2007-2013 MERCEDES-BENZ S-CLASS
FOR 2007-2013 MERCEDES-BENZ CL-CLASS

12. REMOVE THE AIR LINE. (FIGURE 11)



FIGURE 11

13. REMOVE THE THREE (3) TOP MOUNTING NUTS. (FIGURE 12)

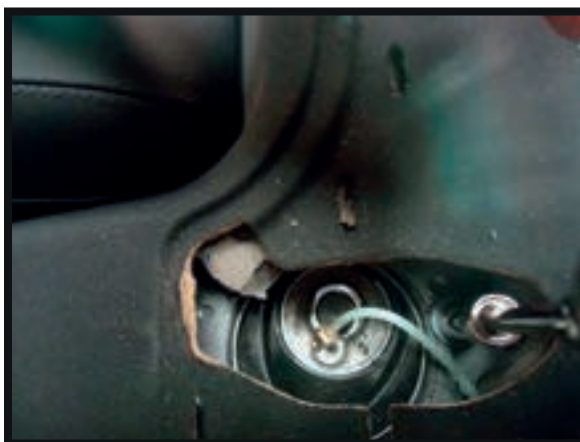


FIGURE 12

14. REMOVE THE LOWER CONTROL ARM BOLT AND THE LOWER AIR STRUT MOUNTING BOLT. (FIGURE 13)



FIGURE 13



SSAS02604R
DI.PA. SPORT REMANUFACTURED
REAR LEFT AIR STRUT
FOR 2007-2013 MERCEDES-BENZ S-CLASS
FOR 2007-2013 MERCEDES-BENZ CL-CLASS

15. PULL DOWN ON THE LOWER CONTROL ARM AND REMOVE THE AIR STRUT FROM THE VEHICLE.
(FIGURE 14)



FIGURE 14

16. REMOVAL COMPLETE.

AIR STRUT INSTALLATION



Tighten all nuts and bolts to manufacturer's specifications during the installation process.

1. INSTALLATION IS IN THE REVERSE ORDER OF AIR STRUT REMOVAL.